

Table of Contents	Contents
	1. Introduction2
	2. Features.....2
	3. Technical data..... 2
	4. Description..... 4
	5. Filtration..... 4
	6. Code numbers..... 4
	7. Dimensions [mm].....5
	8. Installation..... 5
	9. Spare parts..... 6

1. Introduction

Power Pack valve VPH 15 E is multifunction unit which reduces the costs of connections and hoses/tubes by incorporating the functions of a pressure relief valve and a directional control valve to provide a bypass function.

The valves are electrically-activated ON/OFF valves (closed (NC) or open (NO) when the coil is de-energized).

The pressure relief function is designed to limit the system pressure by draining surplus water flow from the pressure side, and to protect system components against overload as a result of pressure peaks.

The VPH 15 E valve is designed for use with drinking water, i.e. water containing no additives of any kind. (See EU drinking water directive EU 98/83/EC).

2. Features

- High enclosure, IP 67
- Corrosion-proof materials (stainless steel, AISI 304/W.No. 1.4301 and plastic)
- The seat valve design ensures a tight seal
- Easy-to-clean surfaces.

3. Technical data

Adjustable pressure range	10-210 bar
Nom. flow	15 l/min
Max. flow	20 l/min
Max. fluid temperature	50°C
Opening time at nom. flow	90 ms
Closing time at nom. flow	350 ms
Pressure drop	see graph page 3
Weight	3 kg
Ambient temperature	0°C to +50°C
Fluid temperature ¹⁾	-30°C to +50°C
Storage temperature	-40°C to +70°C

¹⁾ At fluid temperature below +3°C, antifreeze additives must be added to fluid.

Архангельск (8182)63-90-72
 Астана (7172)727-132
 Астрахань (8512)99-46-04
 Барнаул (3852)73-04-60
 Белгород (4722)40-23-64
 Брянск (4832)59-03-52
 Владивосток (423)249-28-31
 Волгоград (844)278-03-48
 Вологда (8172)26-41-59
 Воронеж (473)204-51-73
 Екатеринбург (343)384-55-89

Иваново (4932)77-34-06
 Ижевск (3412)26-03-58
 Казань (843)206-01-48
 Калининград (4012)72-03-81
 Калуга (4842)92-23-67
 Кемерово (3842)65-04-62
 Киров (8332)68-02-04
 Краснодар (861)203-40-90
 Красноярск (391)204-63-61
 Курск (4712)77-13-04
 Липецк (4742)52-20-81

Магнитогорск (3519)55-03-13
 Москва (495)268-04-70
 Мурманск (8152)59-64-93
 Набережные Челны (8552)20-53-41
 Нижний Новгород (831)429-08-12
 Новокузнецк (3843)20-46-81
 Новосибирск (383)227-86-73
 Омск (3812)21-46-40
 Орел (4862)44-53-42
 Оренбург (3532)37-68-04
 Пенза (8412)22-31-16

Пермь (342)205-81-47
 Ростов-на-Дону (863)308-18-15
 Рязань (4912)46-61-64
 Самара (846)206-03-16
 Санкт-Петербург (812)309-46-40
 Саратов (845)249-38-78
 Севастополь (8692)22-31-93
 Симферополь (3652)67-13-56
 Смоленск (4812)29-41-54
 Сочи (862)225-72-31
 Ставрополь (8652)20-65-13

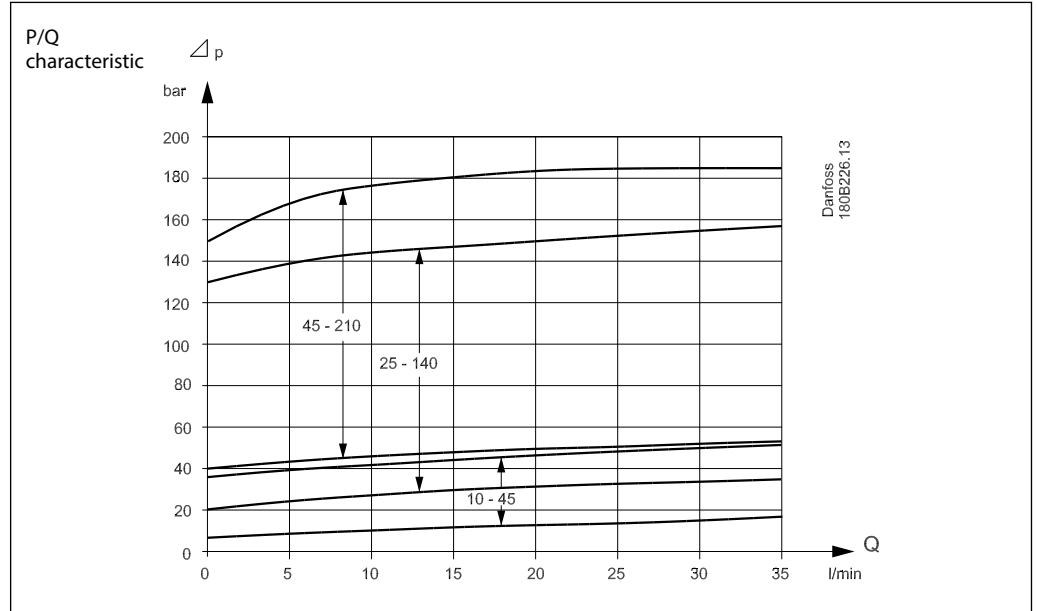
Сургут (3462)77-98-35
 Тверь (4822)63-31-35
 Томск (3822)98-41-53
 Тула (4872)74-02-29
 Тюмень (3452)66-21-18
 Ульяновск (8422)24-23-59
 Уфа (347)229-48-12
 Хабаровск (4212)92-98-04
 Челябинск (351)202-03-61
 Череповец (8202)49-02-64
 Ярославль (4852)69-52-93

Киргизия (996)312-96-26-47 Казахстан (772)734-952-31 Таджикистан (992)427-82-92-69

Relief valve

Max. flow: 20 l/min

Pressure setting range: 10 to 40 bar, 25 to 140 bar, 45 to 210 bar



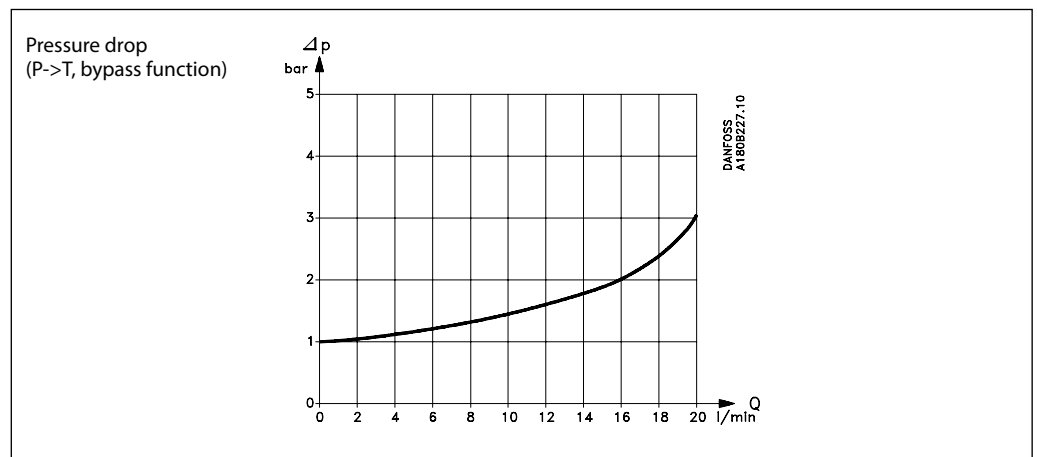
2/2-way valve

Max. flow: 20 l/min

Max. pressure for NO: 140 bar

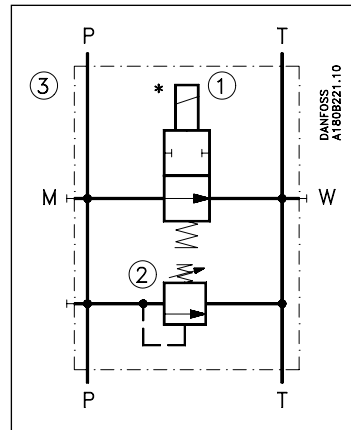
Max. pressure for NC: 210 bar

Static characteristic:

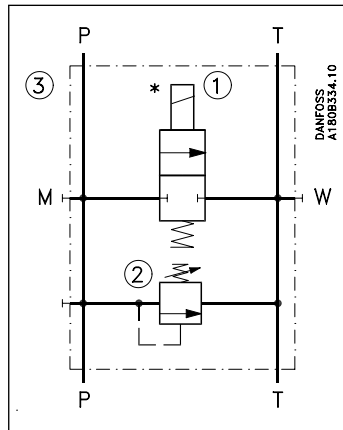


4. Description

VPH 15 E - NO



VPH 15 E - NC



- P: G^{3/8} – pressure from pump or pressure line to system
- T: G^{3/8} – tank return line from system or return line to filter
- M: G^{3/8} (plugged) – pressure gauge
- W: G^{1/4} (plugged) – water inlet

No.	Item	Description
1	Directional valve	2/2-way valve, electrically activated
2	Pressure relief valve	Manual setting
3	Power pack valve	Directional valve + relief valve

5. Filtration

The water supplied to the valve must be filtered:
 10 µm abs., β₁₀ -value > 5000 filter is recommended.

6. Code numbers

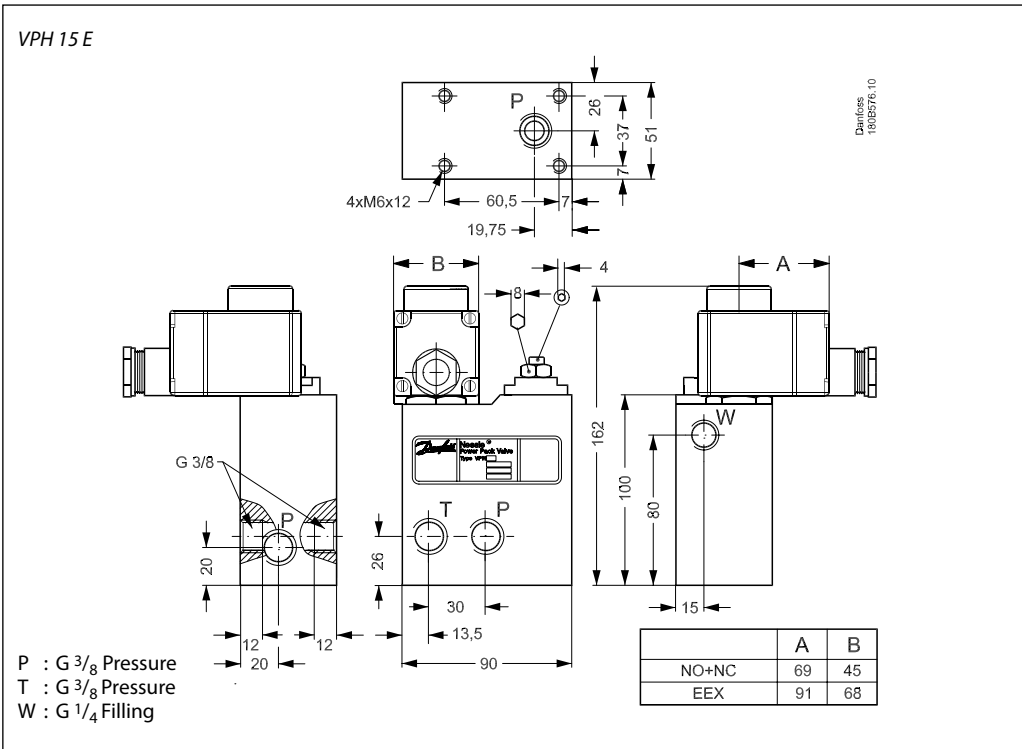
Power pack valve	Comments	Code No.
VPH 15 E - NO	Pressure range 25 to 140 bar	180G0040
VPH 15 E - NC	Pressure range 25 to 140 bar	180G0041
VPH 15 E - NC	Pressure range 45 to 210 bar	180G0044
VPH 15 E - NO	Pressure range 10 to 40 bar	180G0042

* Coils for bypass valve, please order separately

Coil	Coils (clip-on) (NC + NO)
24 V/50 Hz/12 W	018F7920
220 V/50 Hz/12 W	018F7921
240 V/50 Hz/11 W	018F7924
24 V/60 Hz/14 W	018F7922
220 V/60 Hz/13 W	018F7925
240 V/60 Hz/15 W	018F7926
110 V/50/60 Hz/15 W	018F7923
12 V d.c./15 W	018F7913
24 V d.c./16 W	018F7914

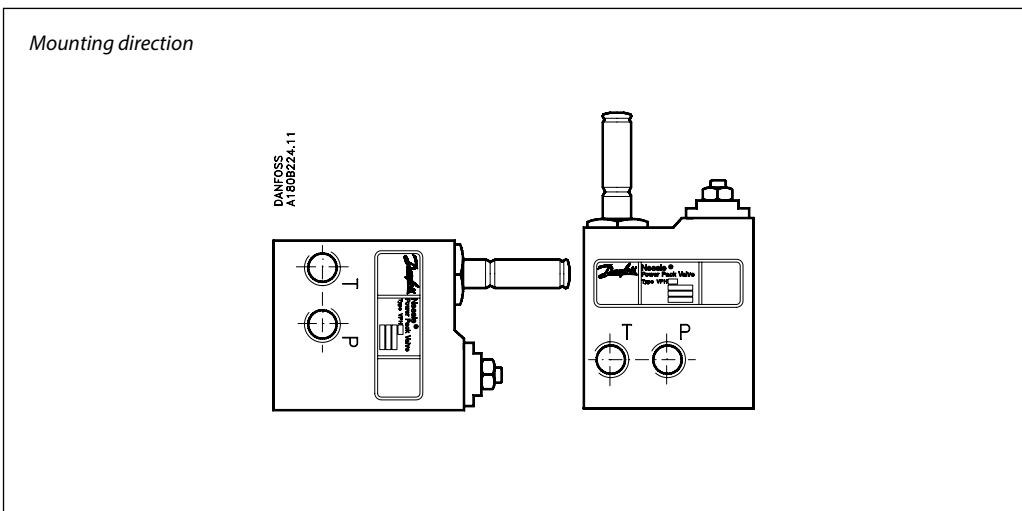
For other voltages, please contact Sales Organisation for High-Pressure Pumps.

7. Dimensions [mm]



8. Installation

The valve must be installed as illustrated below.



Архангельск (8182)63-90-72
Астана (7172)727-132
Астрахань (8512)99-46-04
Барнаул (3852)73-04-60
Белгород (4722)40-23-64
Брянск (4832)59-03-52
Владивосток (423)249-28-31
Волгоград (844)278-03-48
Вологда (8172)26-41-59
Воронеж (473)204-51-73
Екатеринбург (343)384-55-89

Иваново (4932)77-34-06
Ижевск (3412)26-03-58
Казань (843)206-01-48
Калининград (4012)72-03-81
Калуга (4842)92-23-67
Кемерово (3842)65-04-62
Киров (8332)68-02-04
Краснодар (861)203-40-90
Красноярск (391)204-63-61
Курск (4712)77-13-04
Липецк (4742)52-20-81

Магнитогорск (3519)55-03-13
Москва (495)268-04-70
Мурманск (8152)59-64-93
Набережные Челны (8552)20-53-41
Нижний Новгород (831)429-08-12
Новокузнецк (3843)20-46-81
Новосибирск (383)227-86-73
Омск (3812)21-46-40
Орел (4862)44-53-42
Оренбург (3532)37-68-04
Пенза (8412)22-31-16

Пермь (342)205-81-47
Ростов-на-Дону (863)308-18-15
Рязань (4912)46-61-64
Самара (846)206-03-16
Санкт-Петербург (812)309-46-40
Саратов (845)249-38-78
Севастополь (8692)22-31-93
Симферополь (3652)67-13-56
Смоленск (4812)29-41-54
Сочи (862)225-72-31
Ставрополь (8652)20-65-13

Сургут (3462)77-98-35
Тверь (4822)63-31-35
Томск (3822)98-41-53
Тула (4872)74-02-29
Тюмень (3452)66-21-18
Ульяновск (8422)24-23-59
Уфа (347)229-48-12
Хабаровск (4212)92-98-04
Челябинск (351)202-03-61
Череповец (8202)49-02-64
Ярославль (4852)69-52-93

Киргизия (996)312-96-26-47 Казахстан (772)734-952-31 Таджикистан (992)427-82-92-69